

EV charging at your
property can be easy,
no matter your parking
configuration



Assigned charging

If you offer residents dedicated parking spaces with a shared meter, assigned charging is best for your property.



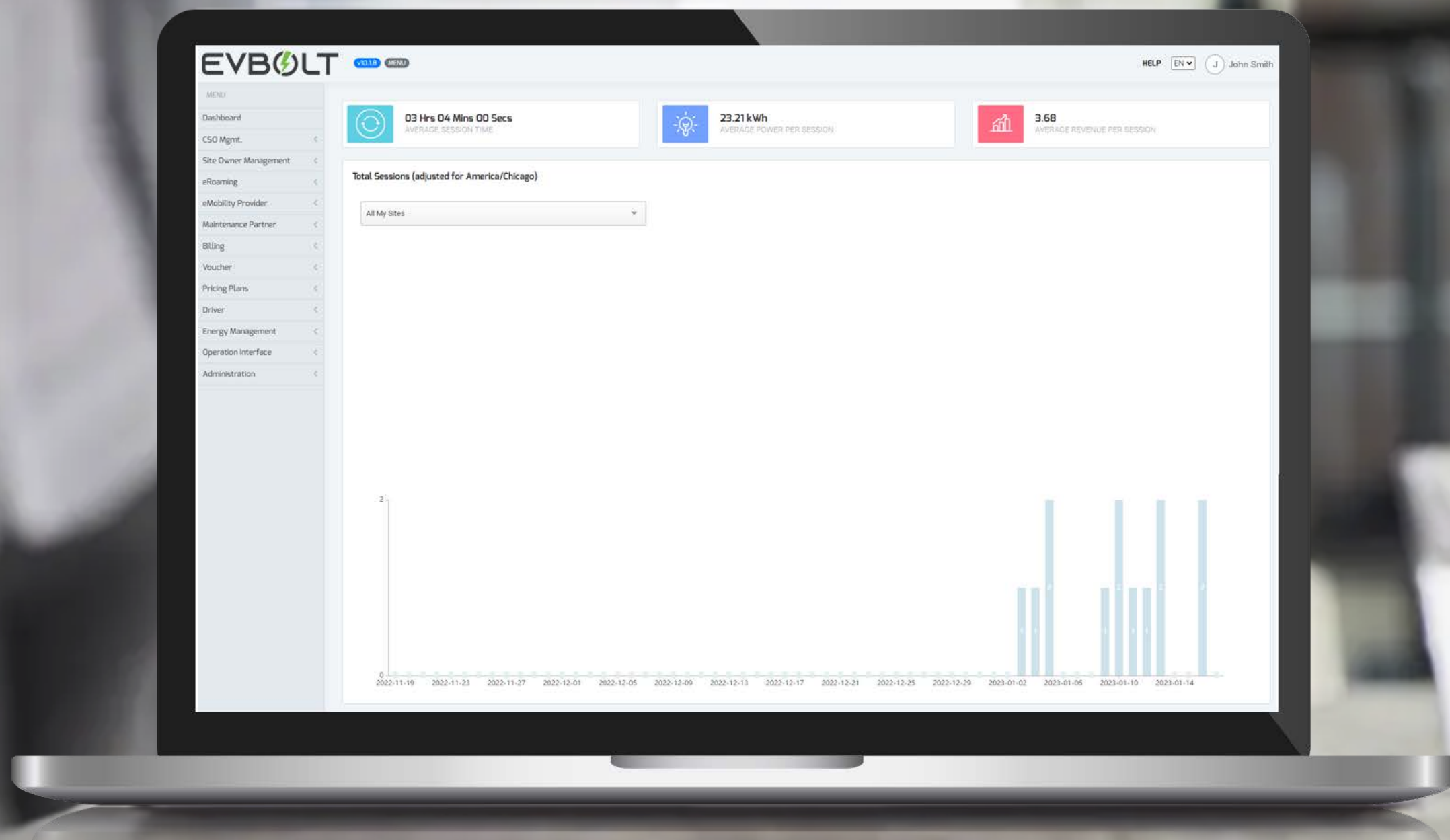
Mixed-use charging

If you offer resident and public charging, a mixed-use solution is best.



Community charging

If your residents park in a different spot every day, community charging is best for your property.



Easy software management

EVBOLT makes it simple to offer your residents EV charging and let your team focus on what they do best.

Connect with an expert today!

evbolt.com/apartment-complexes

EVBO**LT**